

Triangularwave Technologies, Inc.

Centrifugal Separators

Removes dense solids without replaceable filter elements

How they work

High velocity influent passes through the separator, which is designed to produce a circular flow pattern. Using gravitational force, sand, debris and sludge migrate to the separator's side walls and downward, into a solids holding chamber. Cleansed effluent rises up, through the vortex and is returned back to the system. Subsequently, the separated solids are purged from the holding chamber, continuously, manually or automatically, depending on what type equipment is utilized.

Features & benefits

- Removes 98% of all solids with a 1.8 specific gravity or more, and all particles greater than 40 micron in size
- Rated for pressures to 150 PSID
- Rated for temperatures to 200°F
- Epoxy coated, carbon steel construction
- No routine maintenance required
- Minimum 4 PSI pressure drop
- Compact design to save space

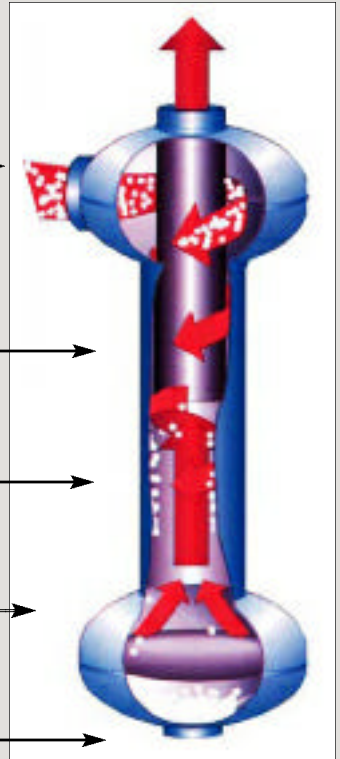
Liquids and solids enter the separator creating a circular flow pattern

Centrifugal action losses the heavier than water solids against the perimeter of the separation chamber

The solids drop along the perimeter and collect under the spin trap plate

The solids drop along the perimeter and collect under the spin trap plate

Solids are purged based on the systems solids accumulation



In-line centrifugal separators (no legs)

Model Number	Flow Rate Range (GPM)	Diameter	Height	Inlet (Side)	Outlet (Top)	Drain (Bottom)	Shipping Weight
FP-CS-C-75	14-25	6"	22-7/16"	3/4"	3/4"	3/4"	16
FP-CS-C-100	28-49	6"	22-7/16"	1"	1"	3/4"	18
FP-CS-C-150	67-115	6"	30"	1-1/2"	1-1/2"	3/4"	22
FP-CS-C-200	90-157	10"	34"	2"	2"	1-1/2"	42
FP-CS-C-300	205-355	10"	33-7/8"	3"	3"	1-1/2"	46

High flow centrifugal separators (models with legs)

Model Number	Flow Rate Range (GPM)	Diameter	Height	Inlet (Side)	Outlet (Top)	Drain (Bottom)	Shipping Weight
FP-CS-C-400	352-610	12-1/8"	53-1/2"	4" flange	4" flange	1-1/2"	165
FP-CS-C-600	800-1,385	14-1/8"	60-1/2"	6" flange	6" flange	1-1/2"	232
FP-CS-C-800	1,385-2,398	18-3/16"	70-1/2"	8" flange	8" flange	1-1/2"	365
FP-CS-C-1000	2,183-3,780	22"	86-1/2"	10" flange	10" flange	1-1/2"	575
FP-CS-C-1200	2,915-5,049	24"	100-1/2"	12" flange	12" flange	2"	852
FP-CS-C-1400	3,817-6,610	30"	111-1/2"	14" flange	14" flange	2"	1,382
FP-CS-C-1800	6,469-11,204	36-1/8"	132-1/2"	18" flange	18" flange	2"	2,140

SEPARATOR MANUAL PURGE KITS

Manual purge kits for centrifugal separators

Part Number	Separator Outlet	Description
MPK-75		3/4" Manual purge kit with valve and fittings
MPK-150	1-1/2"	Manual purge kit with valve and fittings
MPK-200	2"	Manual purge kit with valve and fittings

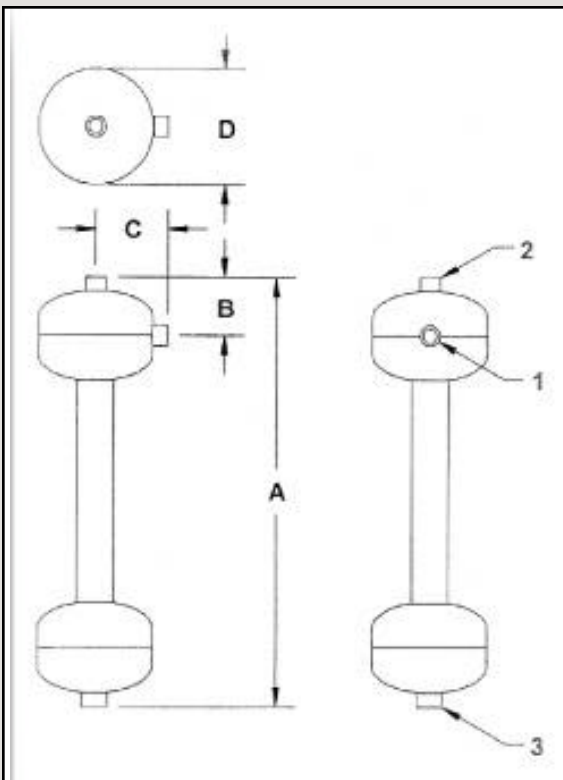
Timer purge kits for centrifugal separators (on/off timer models)

Part Number	Separator Outlet	Description
APT-75	3/4"	3/4" motorized valve with on / off timer, panel mounted
APT-150	1-1/2"	1-1/2" motorized valve with on / off timer, panel mounted
APT-200 2"	2"	motorized valve with on / off timer, panel mounted

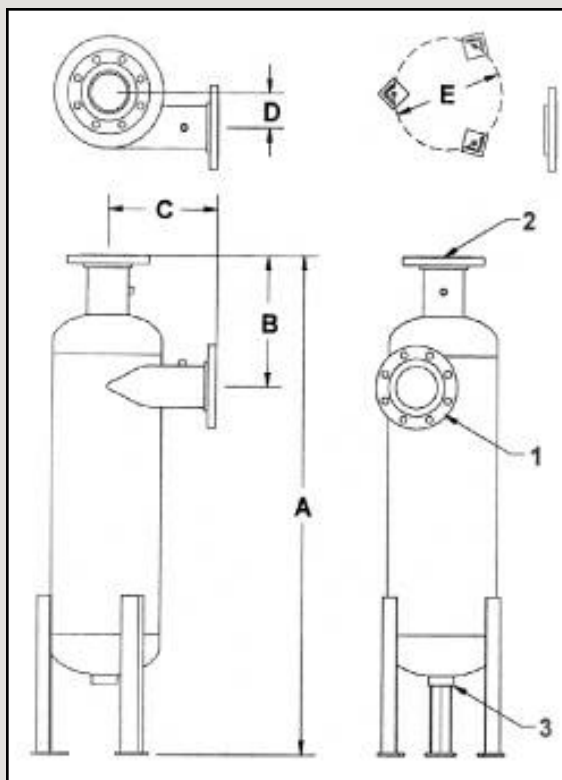
Automatic purge kits for centrifugal separators (with deluxe multi-set timers)

Part Number	Separator Outlet	Description
APMST-75	3/4"	3/4" motorized valve with multi-set timer, panel mounted
APMST-150	1-1/2"	1-1/2" motorized valve with multi-set timer, panel mounted
APMST-200	2"	2" motorized valve with multi-set timer, panel mounted

In-line models



Models with legs



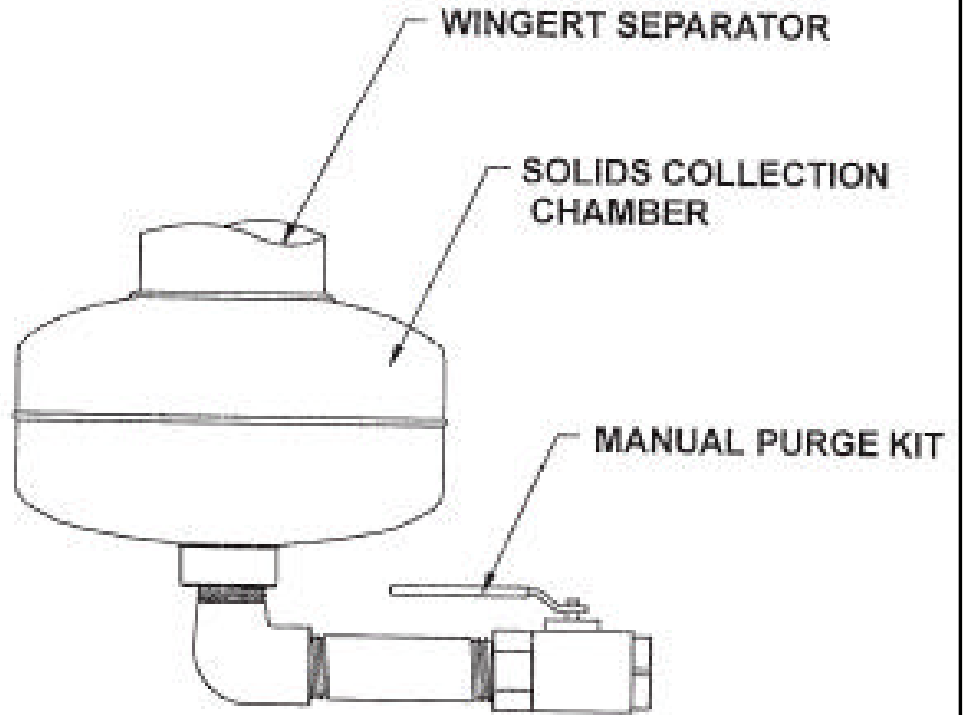
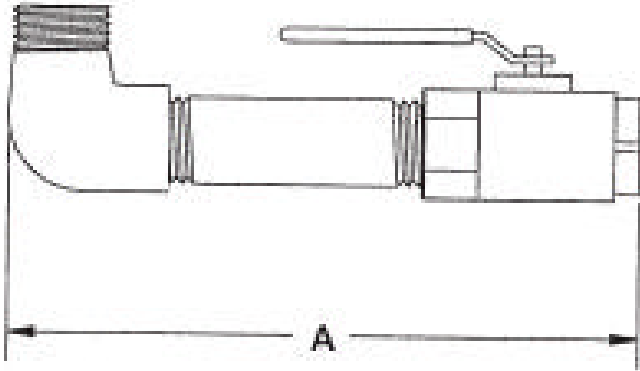
Note: All dimensions are +/-1/8". All weights are approximate. All dimensions are subject to change without notice.

Please Note:

System engineering design, weight, size and system component assembly may vary based on TWT engineering review, water conditions, application, industry and/or customer specific needs.

Pumps, piping, fittings, valves, and other material needed to and from system owners responsibility.

SEPARATOR MANUAL PURGE KITS



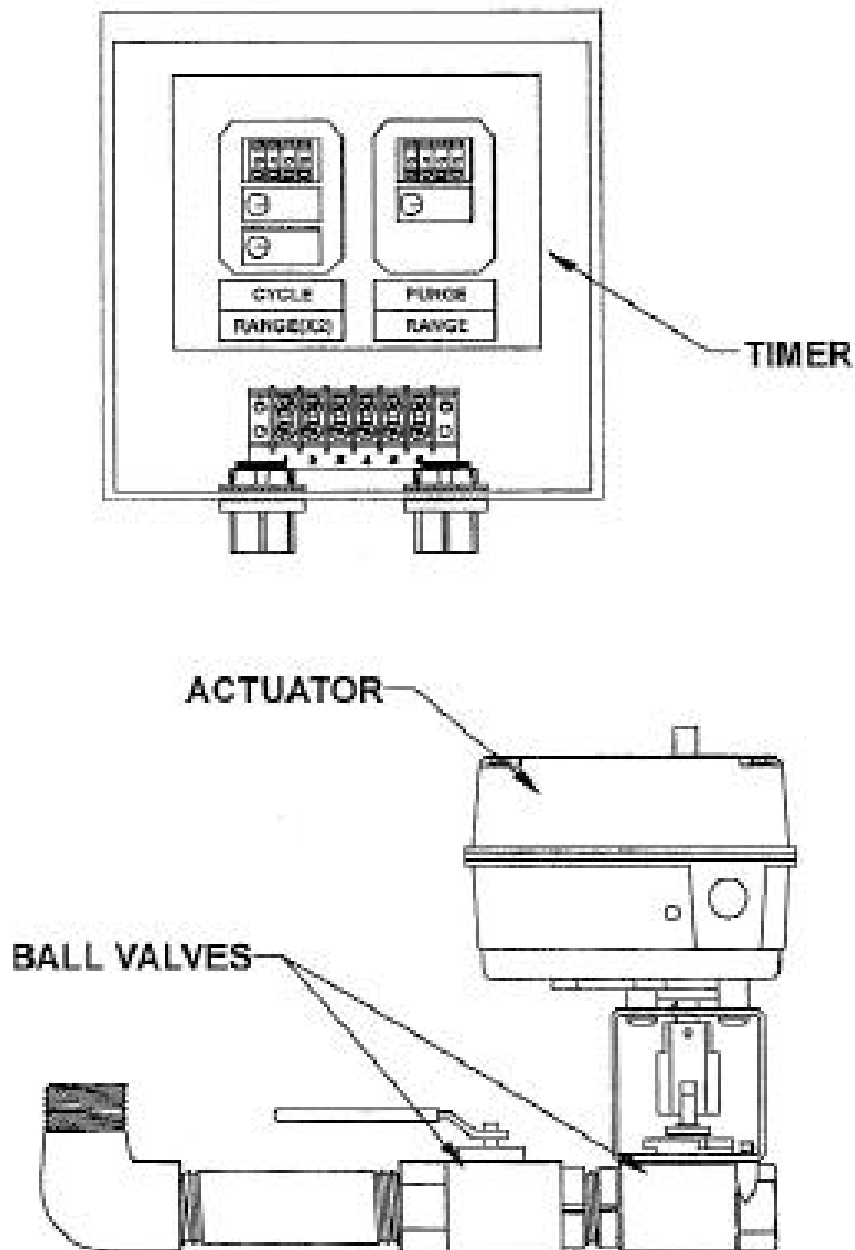
Note: All dimensions are +/- 1/8". All weights are approximate. All dimensions are subject to change without notice.

Please Note:

System engineering design, weight, size and system component assembly may vary based on TWT engineering review, water conditions, application, industry and/or customer specific needs.

Pumps, piping, fittings, valves, and other material needed to and from system owners responsibility.

SEPARATOR MOTORIZED PURGE KITS



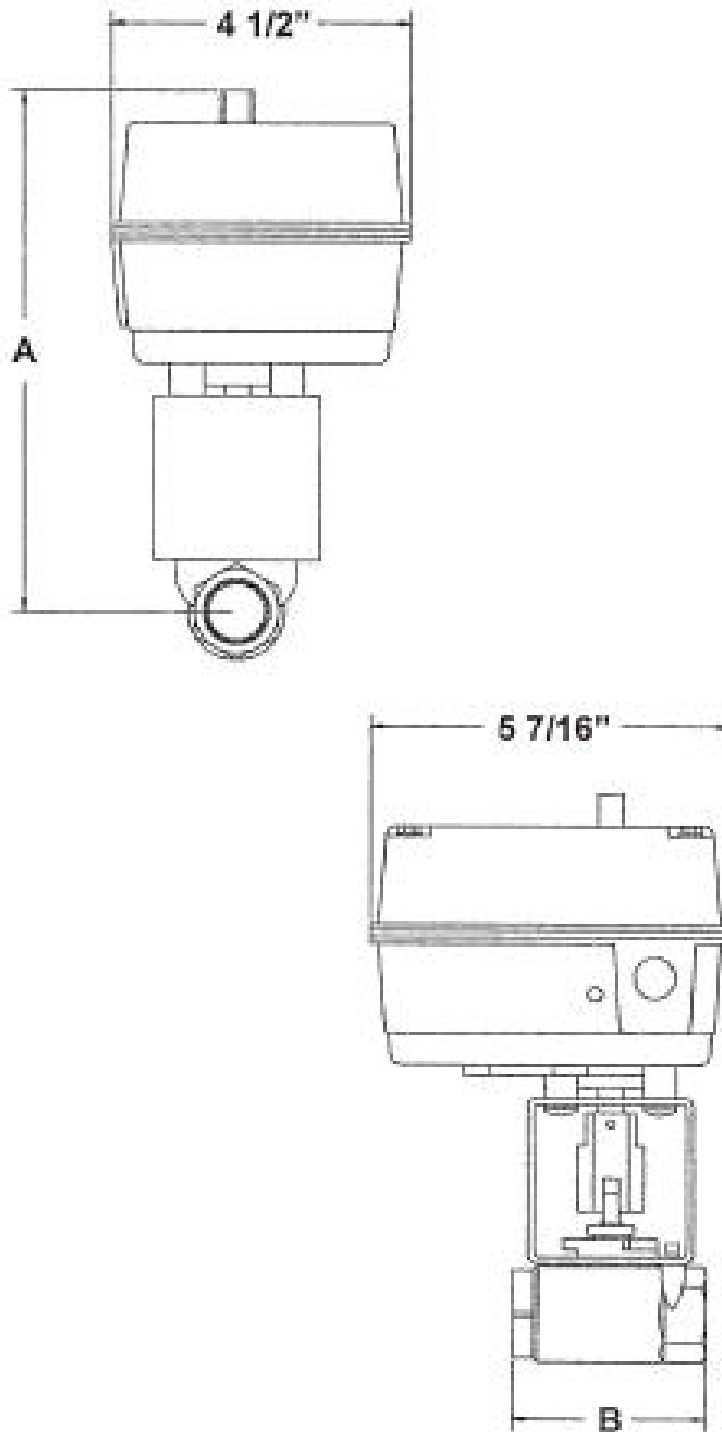
Note: All dimensions are +/-1/8". All weights are approximate. All dimensions are subject to change without notice.

Please Note:

System engineering design, weight, size and system component assembly may vary based on TWT engineering review, water conditions, application, industry and /or customer specific needs.

Pumps, piping, fittings, valves, and other material needed to and from system owners responsibility.

SEPARATOR MOTORIZED PURGE KITS



Note: All dimensions are +/-1/8". All weights are approximate. All dimensions are subject to change without notice.

Please Note:

System engineering design, weight, size and system component assembly may vary based on TWT engineering review, water conditions, application, industry and/or customer specific needs.

Pumps, piping, fittings, valves, and other material needed to and from system owners responsibility.